



Sutton Court Road, London, W4 3HT

Guide Price £1,250,000

WHITMAN & CO.

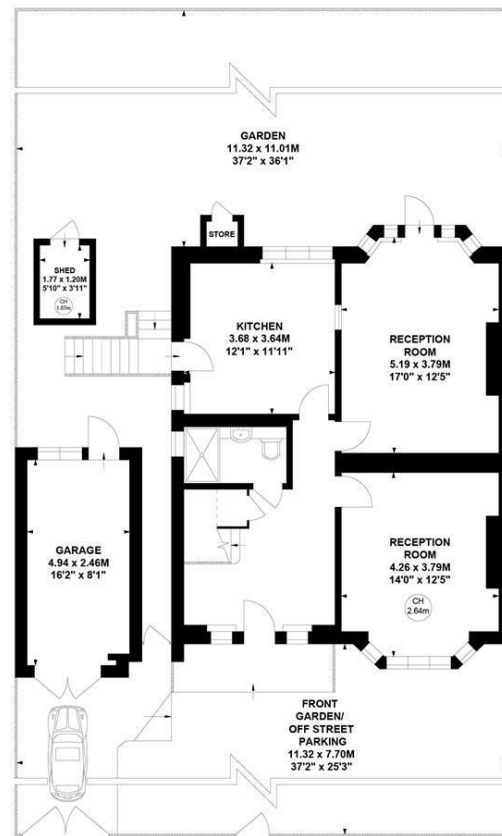
SALES · LETTINGS · COMMERCIAL

- Unmodernised semi-detached house
- Potential to extend and remodel
- Good school catchments
- Wide frontage with off street parking
- Five double bedrooms
- No onward chain

Tenure - Freehold
Local Authority - Hounslow
Council Tax - Band G

THE PROPERTY

An unmodernised semi-detached family home with a substantial frontage and off-street parking located in the Grove Park area of Chiswick. The house is arranged over two floors with potential to modernise and extend, subject to the necessary consents. The accommodation comprises five double bedrooms, two bathrooms, a spacious entrance hall, two spacious reception rooms, a kitchen, a garage, a large loft and a private rear garden. Local amenities include Fauconberg Parade, with its array of shops and restaurants, including an award-winning deli, Strand on the Green riverside, and Chiswick House and Grounds. Chiswick High Road's more extensive facilities are also easily accessible. Transport links include Chiswick mainline station, Gunnersbury tube/mildmay station, local bus routes and the A4/M4 for routes in and out of London. No onward chain. The house has been vacant for over 2 years, so it qualifies for VAT exemption on refurbishment works.



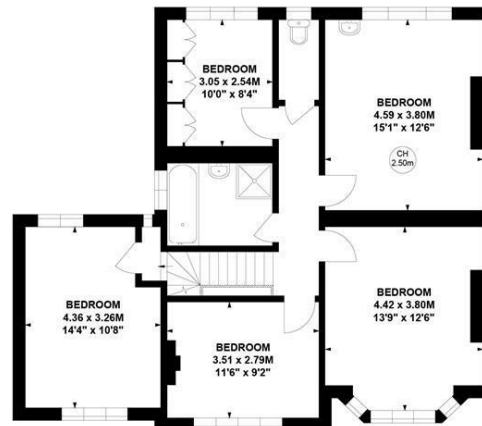
Ground Floor

Not to scale, for guidance only and must not be relied upon as a statement of fact.
All measurements and areas are approximate only

Sutton Court Road, W4

Approximate gross internal area
170.08 sq m / 1831 sq ft
(Including Garage, Shed & Store)
Garage : 12.06 sq m / 130 sq ft
Shed : 2.12 sq m / 23 sq ft
Store : 0.45 sq m / 5 sq ft

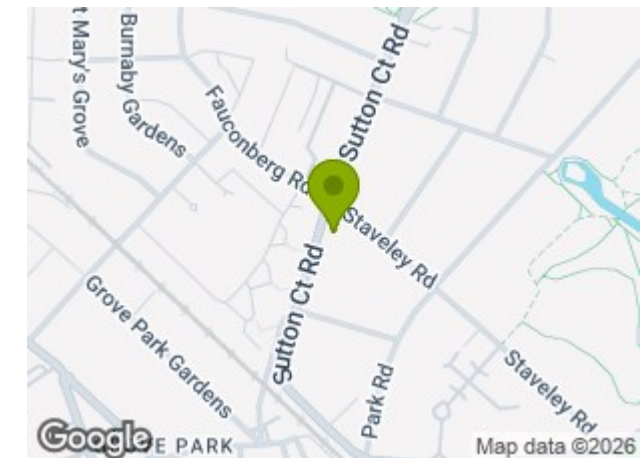
Key :
CH - Ceiling Height



First Floor



SITUATION



5-7 Turnham Green Terrace, Chiswick, London, W4 1RG

Tel 020 8747 8800

E-mail sales@whitmanandco.com

Website www.whitmanandco.com